



whānau āwhina  
plunket



# Education in Schools 2025 Catalogue





## Education in Schools

Education in Schools is a small, but mighty, team working within Whānau Āwhina Plunket. We come from a diverse range of educational backgrounds, including ECE, Primary School and Youth Services. We work closely with our schools and partners to make sure students receive a high-quality education through our resources and programmes.

We're always updating things to keep them relevant and engaging. If you have any questions or just want to chat more about our programmes, we're just an email away: [EIS.Admin@plunket.org.nz](mailto:EIS.Admin@plunket.org.nz)

## Level 2 Descriptions



### 23091 Te reo in the Workplace (5 credits)

A perfect introductory course for te reo Māori. Learn a wide range of words, phrases, waiata, your pepeha and some tikanga practices and values. Revised and published in a brand new, fresh style!



### 29854 Hygiene & Safety (2 credits)

'Wash your hands, brush your teeth, blow your nose!' A fun unit teaching personal hygiene practices and routines. As well as learning to spot and reduce environmental risks and hazards.



### 29857 Learning & Development (5 credits)

Discover the fascinating world of child development. Learn about cognitive and physical milestones in pēpi and tamariki. As well as communication and speech & language skills.



### 29852 Basic Needs & Nutrition (4 credits)

An engaging unit focusing on holistic care. Learn about clothing, cleanliness, sleep routines, nutrition, food preparation and more! NZQA recommends teaching alongside 29853 and 29857.



### 29855 Attachment Relationships (3 credits)

Recognise common responses, patterns and feelings pēpi and tamariki will show when they go through minor and major transitions in life. Learn appropriate ways to support them.



### 29858 Play Experiences (5 credits)

Learn about different kinds of play for infants, toddlers and young children. Understand how play can help development and learning. Students will enjoy providing play experiences for young children and reflect upon the learning that has taken place. Assessment includes a practical element.



### 29853 Child health & wellbeing (4 credits)

Learn essential knowledge on preventing and handling common health issues and communicable diseases. Understand the importance of immunisations. A highly relevant unit for our post-pandemic world.



### 29856 Caring for Infants and Toddlers (2 credits)

Learn appropriate actions to take when caring for pēpi and tamariki, in relation to their health, wellbeing and development. Assessment includes a practical element.

**Place an order today!**





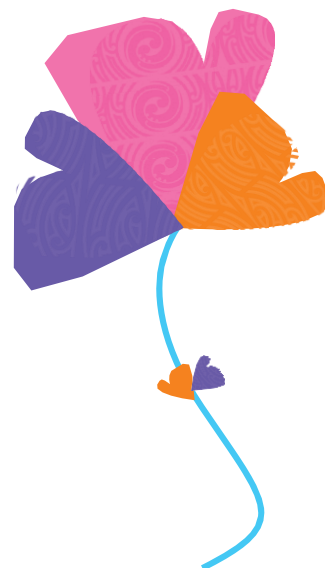
### 29860 Relationships & behaviour (6 credits)

What do you do if a young child bites or swears at you? Learn how to develop a positive relationship with tamariki as well as effective communication and behaviour management skills. Assessment includes a practical element.



### 29861 Support Services (3 credits)

It is important to know where to find help to support young children and yourself. This course looks at how to identify and find different support services in Aotearoa. Revised and published in a brand new, fresh style!

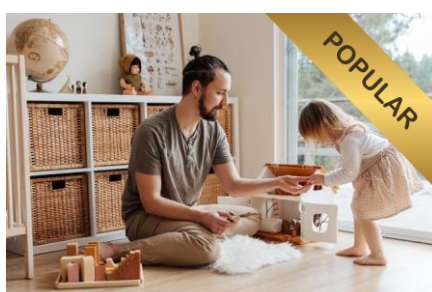


## Level 3 Descriptions



### 10013 Te Whariki (2 credits)

Understand the purpose, relevance and aspirations of the ECE curriculum framework, Te Whariki. This is a great one for students interested in a higher education in ECE.



### 10026 Learning & Development (6 credits)

Learn about holistic education through the seven dimensions of learning and development; social, cultural, spiritual, physical, emotion, cognitive and linguistic (language).



### 26708 Relationships (4 credits)

The first step to a successful career in ECE is knowing how to form respectful, responsive and reciprocal relationships with tamariki. Learn strategies and use in a real ECE setting. Assessment includes practical elements.



### 10019 Safety (4 credits)

Learn how to create and manage safe environments including, minimising risks, hazards and planning for emergencies. Learn these essential skills within a real ECE setting. Assessment includes practical elements.



### 26707 Play (4 credits)

Describe the value of play for children's learning and development. Have fun creating your own play resources for infants, toddlers and young children. Assessment includes practical elements.



### 29864 Attachment & Transitions (4 credits)

Get a snapshot into leading academic theory on attachment including the Circle of Security and Bowlby's stages of attachment. Learn practical steps caregivers can take to form healthy and strong relationships with tamariki.



**29865 Health & Wellbeing (4 credits)**

Can a rash be life-threatening? What is New Zealand's immunisation schedule for pēpi? How can we protect the wellbeing of tamariki? Discover the answers to these important questions and more.



**29868 Professional Behaviour & Wellbeing (4 credits)**

No matter the industry you work in, understanding professional behaviour is essential. Learn appropriate ways to act as well as how to manage personal health & wellbeing in an ECE setting. Assessment includes practical elements.



**29871 Philosophies & Services (3 credits)**

What do we really mean when we refer to ECE? Learn the difference between all the early childhood services in Aotearoa, how they operate and their philosophies.



**29866 Nutrition (3 credits)**

Eating nutritious food has a profound influence on children's growth, brain development, health, energy levels, behaviour, concentration and learning. Learn age-related nutrition needs for tamariki in an ECE setting. Assessment includes practical elements.



**29869 Ethics (3 credits)**

In Aotearoa, it is expected employees act ethically in their practices and decision making. Working in ECE is no exception to this. Learn more about ethical responsibilities and code of conducts.



**29867 Diversity & Communications (5 credits)**

During their careers, kaiako (teachers) in ECE services will work with many types of families. Understand how to communicate with a range of diverse peoples and put into practice in a real ECE setting. Assessment includes practical elements.



## Other offerings (subject to availability in your area)



### Babysitting (Online or In-Person)

Learn babysitting essentials and how to get a job. This course covers the different stages of child development, safety, handling emergencies and basic first aid. Can be completed in one day or across multiple sessions.



### Caring for tamariki

For some students, looking after younger siblings and whānau is a very normal part of life. This course helps equip them with essential skills to keep themselves and their whānau safe and well.



### Youth Parenting (online or In-Person)

From baby cues to nutrition, to self-care and play ideas. This course covers a range of important topics of parenting. It also offers a chance to connect with other youth parents.

*This is a Ministry of Social Development (MSD) approved course, certificates will be issued upon completion.*



### Booster

Our newest initiative provides a great opportunity to give students a boost in credits in a block-style 1-to-2-day course. Boosters can also offer a taster for what Whānau Āwhina Plunket offers. Perfect for students interested in ECE, health care, hospitality and more!



### Combos

Increase student motivation by adding an assessed unit standard to Babysitting, Caring for Tamariki or Youth Parenting courses.

Earn up to 6 credits in one day.



**Get in touch!**

## Level 2

**\$550+GST\***

### 23091

Te reo in the Workplace.....5 Credits

### 29852

Basic Needs & Nutrition.....4 Credits

### 29853

Child health & wellbeing.....4 Credits

### 29854

Hygiene & Safety.....2 Credits

### 29855

Attachment Relationships.....3 Credits

### 29856

Caring for Infants and Toddlers.....2 Credits

### 29857

Learning & Development.....5 Credits

### 29858

Play Experiences.....5 Credits

### 29860

Relationships & behaviour.....6 Credits

### 29861

Support Services.....3 Credits

**\*Price is per unit standard, per class**

## Non-Assessed

- **Babysitting (online or in-person)**
- **Caring for tamariki**
- **Youth Parenting (online or in-person)**

For pricing and availability, [enquire here](#)

## Combos

### 1 Non-Assessed + a Unit Standard

Tag on a Unit Standard to any of the Non-Assessed Courses to earn up to 6 Credits

For pricing and availability, [enquire here](#)

## Level 3

**\$620+GST\***

### 10013

Te Whariki.....2 Credits

### 10019

Safety.....4 Credits

### 10026

Learning & Development.....6 Credits

### 26707

Play.....4 Credits

### 26708

Relationships.....4 Credits

### 29864

Attachment & Transitions.....4 Credits

### 29865

Health & Wellbeing.....4 Credits

### 29866

Nutrition.....3 Credits

### 29867

Diversity & Communications.....5 Credits

### 29868

Professional Behaviour & Wellbeing.....4 Credits

### 29869

Ethics.....3 Credits

### 29871

Philosophies & Services.....3 Credits

**\*Price is per unit standard, per class**

## Single Students from \$95+GST\*\*

### Any Level 2 & 3 Unit Standards

Assessment can be marked by school or Plunket Staff (\*\*additional \$30 for marking)

## Booster Courses

### 1-2 Days

Can be run in either school holidays or term time. Earn between 3-10 Credits

For pricing and availability, [enquire here](#)